

## Polish part of the Bialowieza Forest (BF)

Total area: ~ 630 km<sup>2</sup>

105 km<sup>2</sup> (17% of total area)

protected by the Bialowieza National Park

remaining 83% of the Bialowieza Forest  
managed by the State Forests  
(by three forest districts: Bialowieza,  
Browsk and Hajnowka)

Bialowieza village

### Legend

-  Bialowieza National Park
-  managed forests
-  border of forest district

Poland

Belarus

## Polish part of the Bialowieza Forest (BF)

Total area: ~ 630 km<sup>2</sup>

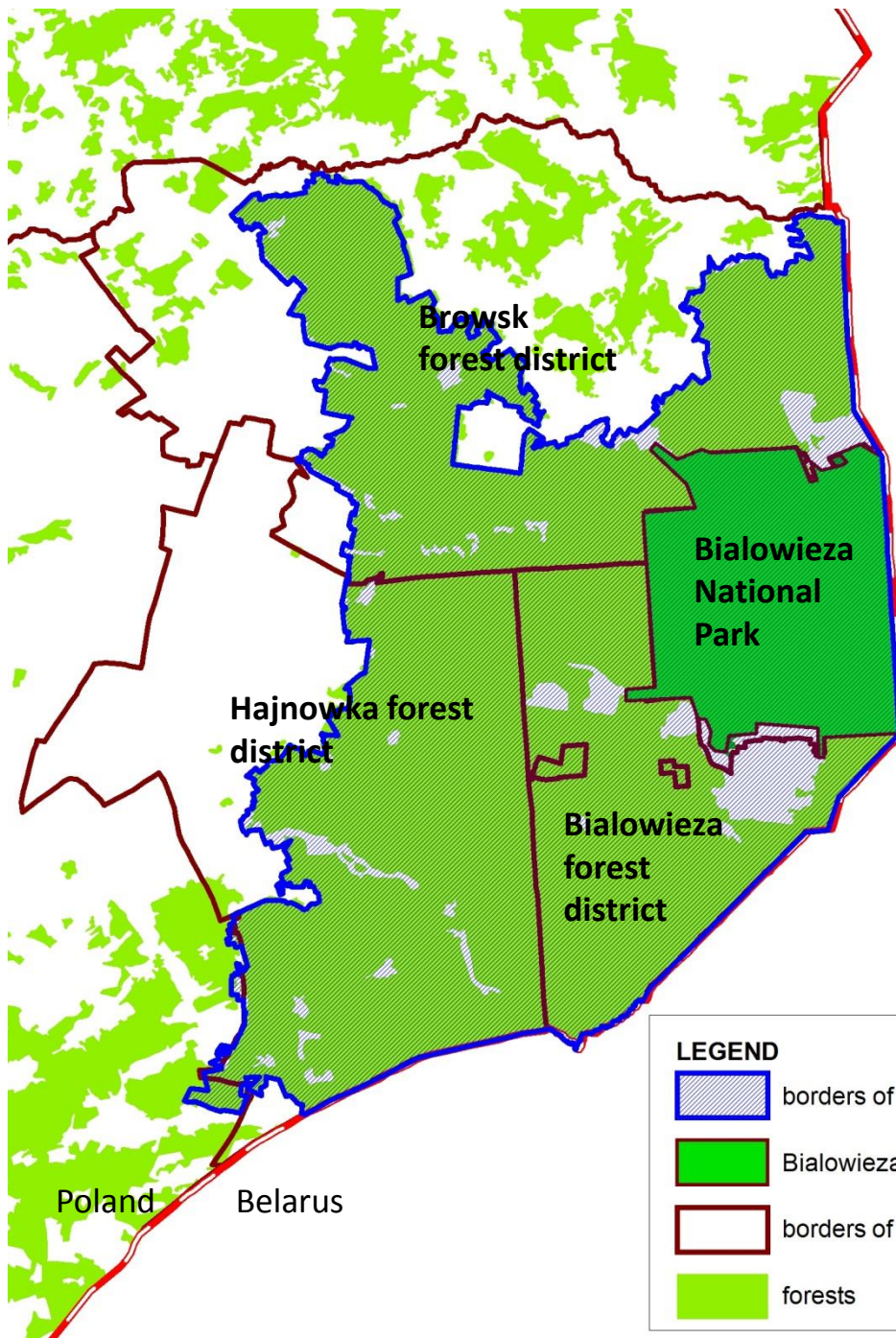
### Natura 2000 site PLC 200004

#### Puszcza Bialowieska





Area: 630.7 km<sup>2</sup>

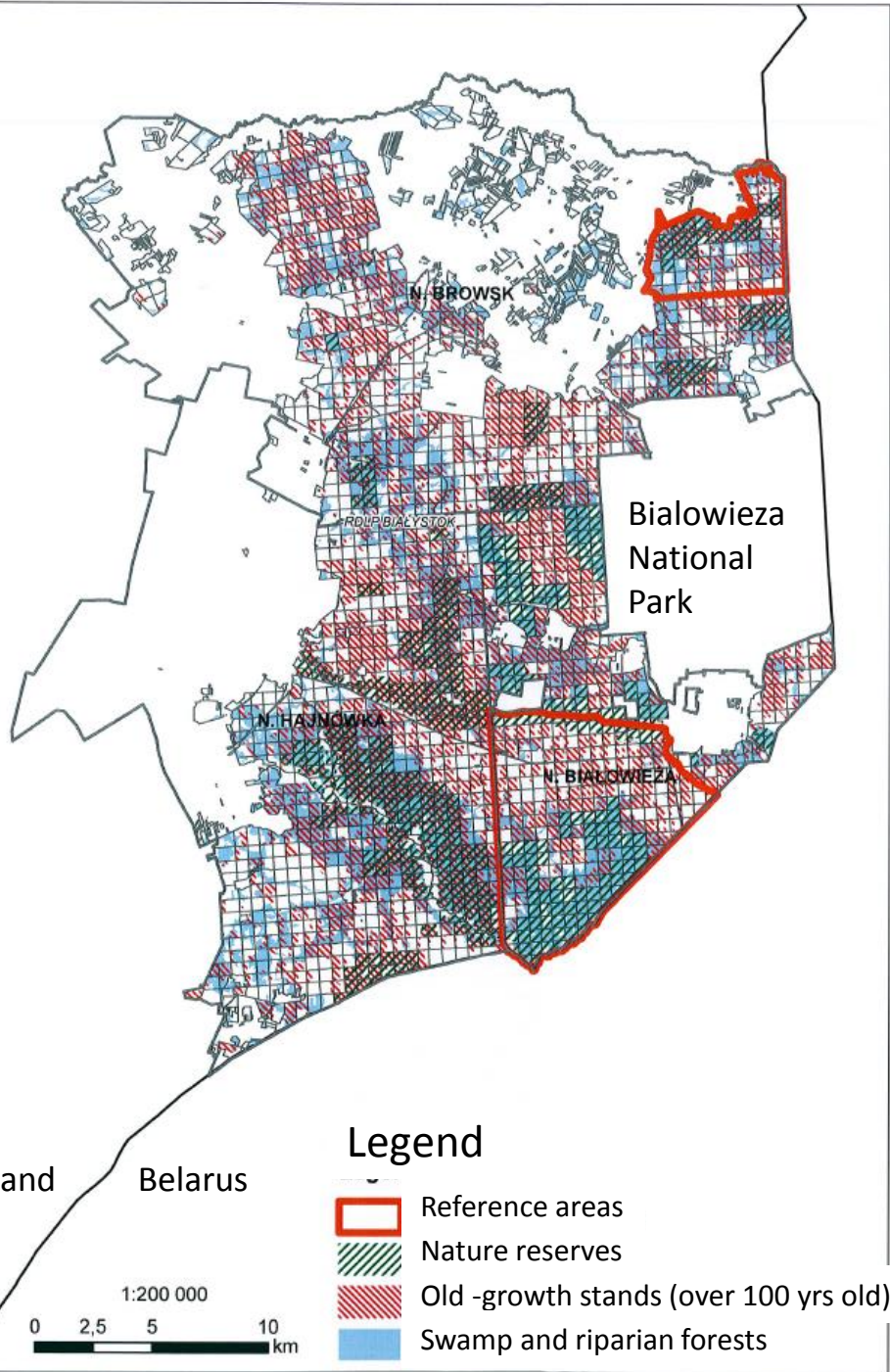
Birds and Habitats Directive site

Includes the Bialowieza National Park and forests of three forest districts



#### LEGEND

-  borders of Natura 2000 site
-  Bialowieza National Park
-  borders of forest districts
-  forests



Map of distribution of so called *reference areas* (surrounded by red line) excluded from tree logging, rest of forests are subject to increased timber harvest (according to the decision of Minister of Environment from 25 of March 2016 and the decision of the General Director of State Forests , 31th of March 2016)

The most valuable old-growths stands in the managed part of BF (red shaded areas) are not excluded from logging

Map from the Decision No 52 of the General Director of State Forests, dr. Konrad Tomaszewski, 31th of March 2016, about detailed rules of forest management in the Białowieża and Browsk forest districts.